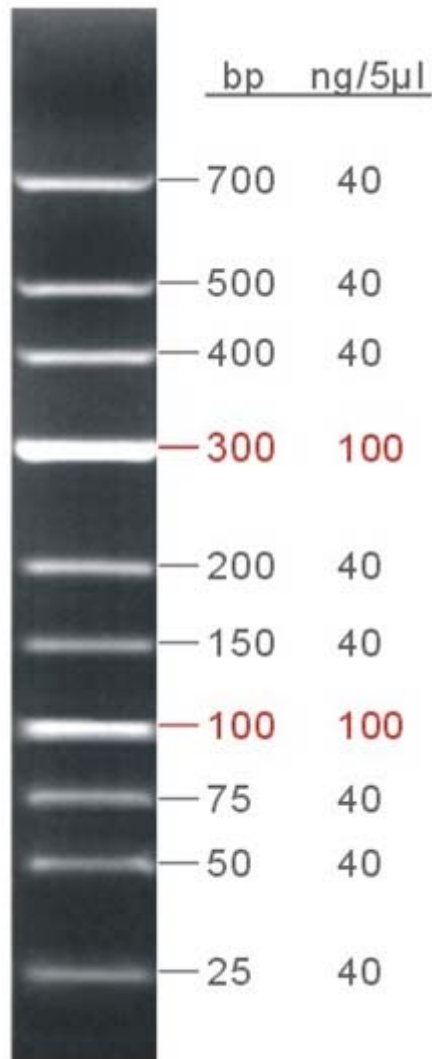


## GRS Low Range Ladder



# GL011.0050 - 50 $\mu$ g

# GL011.5050 - 5x50 $\mu$ g

## Size

50µg each tube

Ready-to-use with loading dye

## Concentration

Typical bands: 100ng/5µl

Other bands: 40ng/5µl

Mix Concentration: 104ng/µl

## Recommended Loading

2-5 µl/lane (50µg allows for ~100-250 lanes)

## Contents (bp)

25, 50, 75, 100, 150, 200, 300, 400, 500, 700

## **Description**

GRS Low Range Ladder is a ready-to-use DNA marker, suitable for sizing linear double-stranded DNA fragments from 25bp-700bp, and composed of 10 chromatography-purified individual DNA fragment. All bands (except 100bp and 300bp) are supplied at approximately 40ng/5µl. The 100bp and 300bp bands have increased intensity relative to the other bands on an ethidium bromide-stained agarose gel.

## **Recommendations**

Do not heat before loading.

## **Storage**

3 months at room temperature

(for long-time preservation, please store at -20°C)

# **GRiSP Research Solutions**

Rua Alfredo Allen, 455

4200-135 Porto

Portugal

[www.grisp.pt](http://www.grisp.pt) | [info@grisp.pt](mailto:info@grisp.pt)