

GRS Protein Marker MultiColour

#GLP01.0500 (500 µl) | GLP01s (trial size)
(FOR RESEARCH ONLY)



Product: Ready-to-use pre-stained protein marker suitable for monitoring protein separation during SDS-PAGE, verification of Western Transfer Efficiency onto membranes, and for estimation of the molecular weight of proteins and/or polypeptides in the range of 10-250kDa. The GRS Protein Marker MultiColour is composed of 12 bands: 10 blue bands and 2 reference bands with different colours for easy identification (one red band (~25kDa) and one green band (~75kDa)).

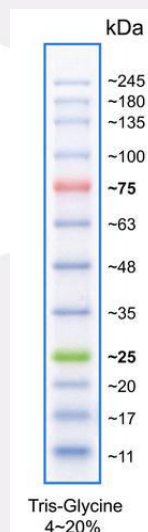
Applications: Protein Electrophoresis (PAGE), Western Blotting

Quantity: #GLP01.0500 contains 500µl of approx. 0.1~0.4 mg/ml of each protein in 20mM Tris-phosphate, pH 7.5 (25°C), 2% SDS, 1mM Dithiothreitol, 3.6M Urea, and 15% (v/v) Glycerol, sufficient for 100-300 lanes.
#GLP01s is a trial sample (25µl) of GRS Protein Marker MultiColour, sufficient for 5-15 lanes.

Appearance: Dark blue liquid

QC: Functionally tested by SDS-PAGE followed by Western Blotting onto nitrocellulose membrane.

Storage: Store at room temperature for up to 2 weeks, at 4°C for up to 3 months or at -20°C for up to 2 years.



Usage:

Load 3 μ l - 5 μ l/well for clear visualization during electrophoresis on mini-gels (100-150 lanes). Apply more for thicker (>1.5mm spacers) or larger gels.

For general Western Blotting, Load 1.5 μ l – 2.5 μ l/well (200-300 lanes).

Note:

The **apparent molecular weight** of pre-stained proteins depends on the electrophoretic conditions and has been determined for SDS-PAGE using Tris-Glycine (4-20% gradient), Bis-Tris 10% MOPS, and Bis-Tris 10% MES Buffer by calibration against an unstained protein marker.

