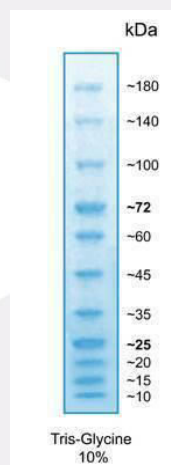


**GRS Protein Marker Blue**  
#GLP02.0500 (500 µl) | GLP02s (trial size)  
(FOR RESEARCH ONLY)



- Product:** Ready-to-use pre-stained protein marker suitable for monitoring protein separation during SDS-PAGE, verification of Western Transfer Efficiency onto membranes and for estimation of the molecular weight of proteins and/or polypeptides in the range of 10-180kDa. The GRS Protein Marker Blue is composed of 11 blue bands including 2 reference bands with more intense colour for easy identification (~25kDa and ~72kDa).
- Applications:** Protein Electrophoresis (PAGE), Western Blotting
- Quantity:** #GLP02.0500 contains 500µl of approx. 0.1~0.5 mg/ml of each protein in 20mM Tris-phosphate, pH 7.5 (25°C), 2% SDS, 1mM Dithiothreitol, 3.6M Urea, and 15% (v/v) Glycerol, sufficient for 100-250 lanes.  
#GLP02s is a trial sample (25µl) of GRS Protein Marker Blue, sufficient for 5-15 lanes.
- Appearance:** Dark blue liquid
- QC:** Functionally tested by SDS-PAGE followed by Western Blotting onto nitrocellulose membrane.
- Storage:** Store at room temperature for up to 2 weeks, at 4°C for up to 3 months or at -20°C for up to 2 years.



### Usage:

Load 3 $\mu$ l - 5 $\mu$ l/well for clear visualization during electrophoresis on mini-gels (100-150 lanes). Apply more for thicker (>1.5mm spacers) or larger gels.

For general Western Blotting, Load 2 $\mu$ l - 3 $\mu$ l/well (150-250 lanes).

### Note:

The **apparent molecular weight** of pre-stained proteins depends on the electrophoretic conditions and has been determined for SDS-PAGE using Tris-Glycine 10%, Bis-Tris 4-12% gradient in MOPS, and Bis-Tris 4-12% gradient in MES Buffer by calibration against an unstained protein marker.

